

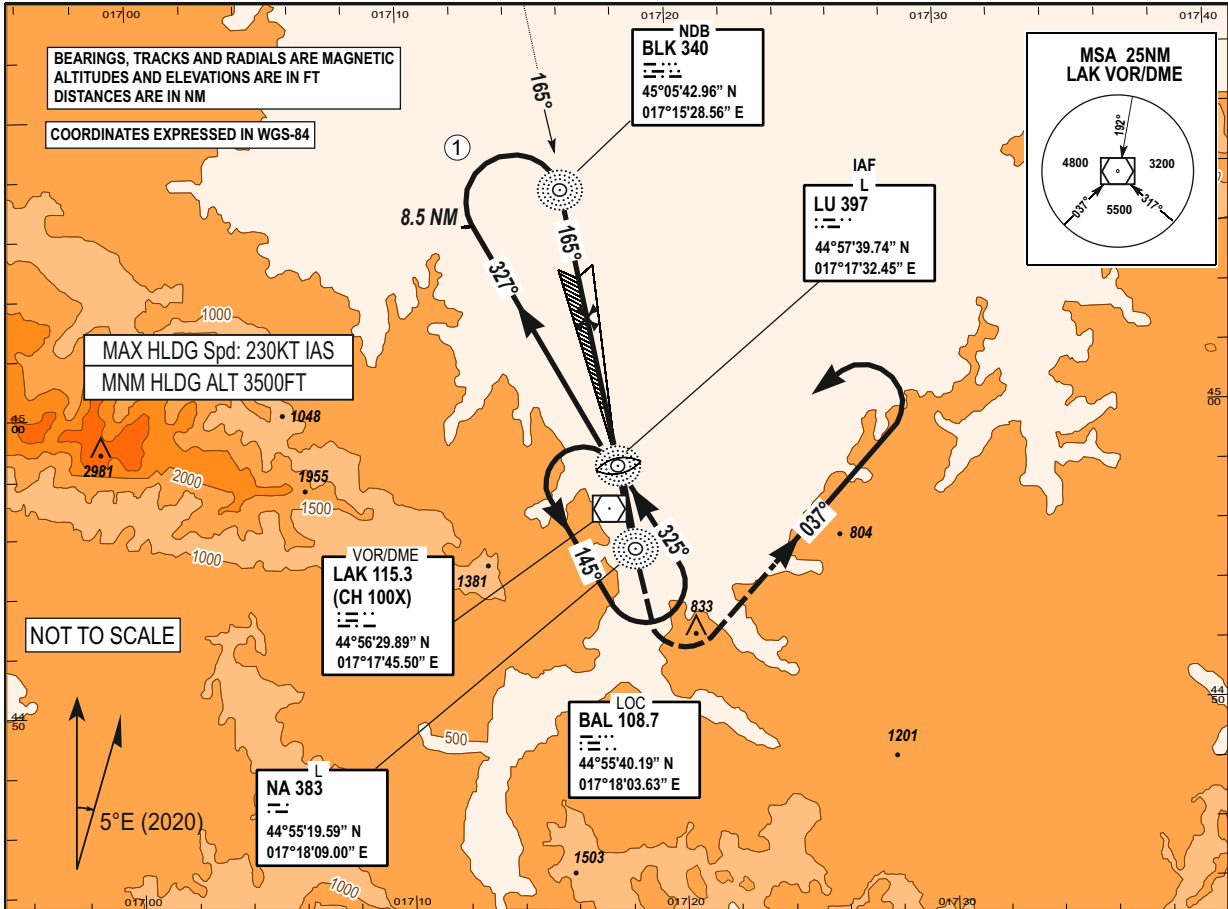
**INSTRUMENT APPROACH CHART - ICAO**

AD ELEV 401 FT  
HEIGHTS RELATED TO THR RWY16 ELEV 376 FT

TRANSITION ALTITUDE 10 000 FT  
VAR 5°E (2020)

TWR/APP 133.075  
SPARE 124.175  
ATIS 122.625

**BANJA LUKA (LQBK) ILSz RWY 16**

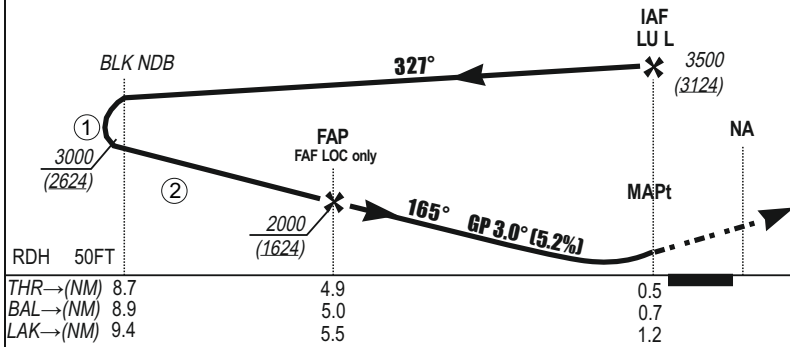


DME DIST/ALTITUDE(HEIGHT) TABLE

|            |                |                |                |                |                |                |               |               |              |
|------------|----------------|----------------|----------------|----------------|----------------|----------------|---------------|---------------|--------------|
| DME BAL    | 9.0            | 8.0            | 7.0            | 6.0            | 5.0            | 4.0            | 3.0           | 2.0           | 1.0          |
| DME LAK    | 9.5            | 8.5            | 7.5            | 6.5            | 5.5            | 4.5            | 3.5           | 2.5           | 1.5          |
| ALT (HGHT) | 3240<br>(2864) | 2920<br>(2544) | 2600<br>(2224) | 2290<br>(1914) | 1970<br>(1594) | 1650<br>(1274) | 1330<br>(954) | 1010<br>(634) | 690<br>(314) |
| 5.2% APCH  |                |                |                |                |                |                |               |               |              |

FAP/FAF TO IAF/LU DISTANCE 4.4NM

|                           |      |      |      |      |      |
|---------------------------|------|------|------|------|------|
| KT                        | 80   | 120  | 150  | 180  | 210  |
| MIN : SEC                 | 3:18 | 2:12 | 1:46 | 1:28 | 1:15 |
| Rate of descent 3° FT/MIN | 420  | 640  | 800  | 950  | 1110 |



**MISSED APPROACH:**  
Climb on RWY TR to 1500 FT.  
Then turn **LEFT** on to track **037°** climbing to 4500 FT.  
Then turn **LEFT** join the holding.

|          |     |     |     |
|----------|-----|-----|-----|
| THR→(NM) | 8.7 | 4.9 | 0.5 |
| BAL→(NM) | 8.9 | 5.0 | 0.7 |
| LAK→(NM) | 9.4 | 5.5 | 1.2 |

CHG: LAK VOR/DME COORDINATES:

OCA / H published in feet.

| CAT | ILS CAT I | LOC only  | CIRCLING   |
|-----|-----------|-----------|------------|
| A   | 620 / 244 | 720 / 344 | 870 / 494  |
| B   | 620 / 244 | 720 / 344 | 1000 / 624 |
| C   | 620 / 244 | 720 / 344 | 1210 / 834 |
| D   | 620 / 244 | 720 / 344 | 1260 / 884 |

WARNINGS:

- ① Remain within 10NM
- ② Do not descend below 3000 until LOC interception.

THIS PAGE INTENTIONALLY LEFT BLANK